

---

3.0 Mega pixels CMOS Digital Microscope

# Operating Instruction

## For Install Drivers

[www.aimscope.com](http://www.aimscope.com)

[www.aimscope.com](http://www.aimscope.com)

---

## I Function outline:

This product use the high resolution 3.0 mega pixels CMOS sensor technique, the USB2.0 high speed interface, the highest support resolution 2048\*1536.This product may be photograph, picture operate and measure.

### Ø CMOS parameter:

<b>Product name</b>	3.0 Mega pixels USB2.0 CMOS color digital microscope
<b>Image sensor</b>	1/2 inch color CMOS image sensor
<b>Chip model</b>	Micron MT9T001
<b>Pixel size</b>	3.2 $\mu$ m $\times$ 3.2 $\mu$ m
<b>Spectrum response</b>	400—1000nm, 635nm
<b>Exposure integral control</b>	1 millisecond to 10 seconds
<b>Numeric output</b>	Color 24 bits
<b>Image output</b>	480MB/S
<b>Frame number</b>	2.5 fps (2048 $\times$ 1536)
<b>Scanning method</b>	Progress scan
<b>Dynamic range</b>	56dB
<b>Resolution</b>	2048 $\times$ 1536、1024 $\times$ 768、640 $\times$ 480
<b>Power source</b>	Supplied from USB2.0 port

## I Suggest disposition:

### Ø Computer:

In order to guarantee the camera can use normally, suggested use the a higher disposition computer.

CPU: Intel Pentium 4—2.6G

RAM: 512MB

HDD: 1GB free space

USB: USB2.0 interface (If the PC is not have, please add a USB2.0 interface board)

Operating system: Windows 2000/XP/Vista

### Ø USB2.0 interface:

Please inspect the your computer whether provides the USB2.0 interface, before in use digital microscope and install the correct actuation.

Recommendation use the mainstream Intel, NEC or the VIE chip product and install the newest camera actuation.

## ● Install drivers:

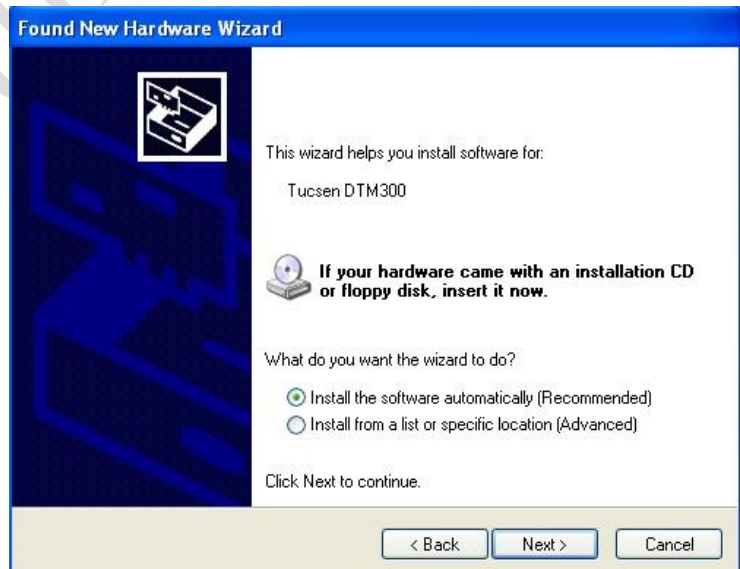
The hardware insert to the USB2.0 interface of computer, the system can report “Found New Hardware”. Then use hardware guide to install drivers, after put CD of drivers into the CD-ROM. Installing drivers have three methods.

### Ø Method 1:

Select “Yes, this time only”, then click the “Next>”.



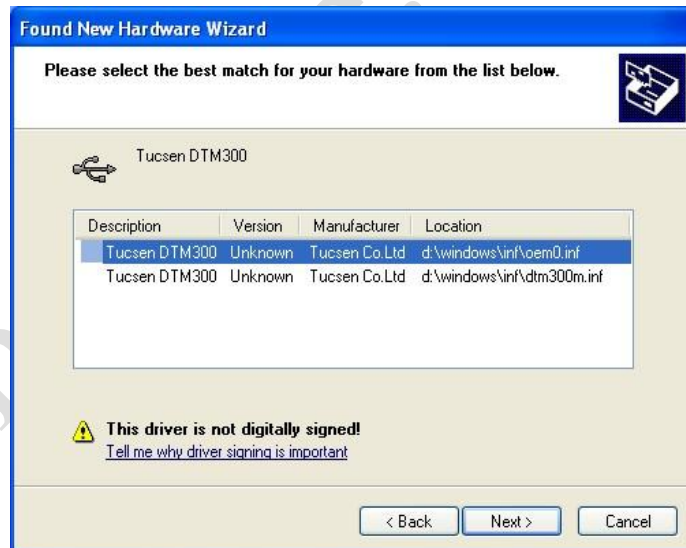
Select “Install the software automatically (Recommended)”, then click the “Next>”.



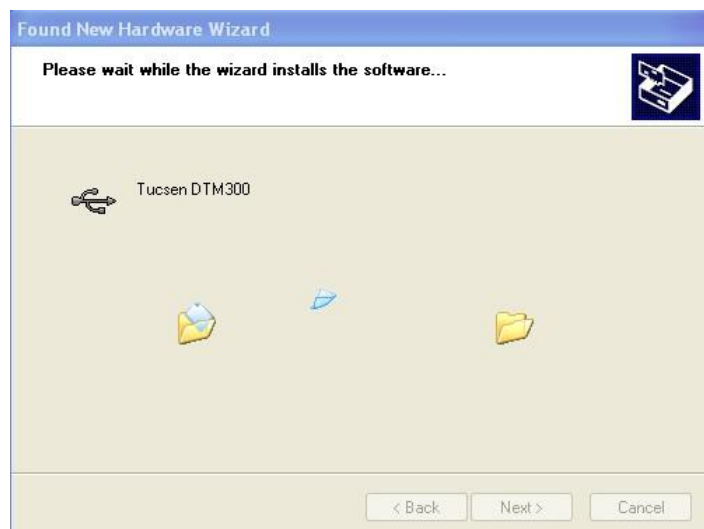
The hardware wizard will be searched automatically the drivers.



Select at will certain item in window, then click the "Next>".



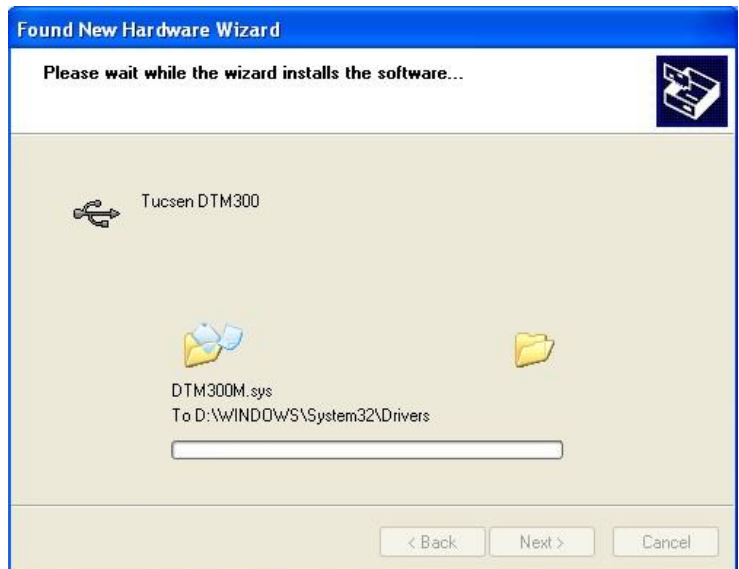
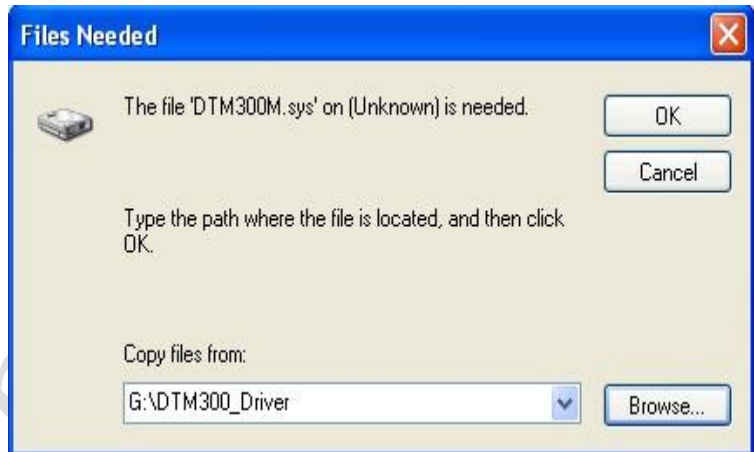
Appear the <Hardware Installation> dialog box in the installing process, please click the "Continue Anyway".





Please click the “Browse...”, if appear the <Files Needed> dialog box. Select file, path: “X:\DTM300\_Driver\DTM300.sys” from the <Browse For Folder> dialog box, then click the “OK”. Or input the path :“X:\DTM300\_Driver\DTM300.sys” in the <Files Needed> dialog box, then click the “OK”.

Note: “X” represent the CD.



Please click the “Finish”, then the hardware drivers is finished.

## ø Method 2:

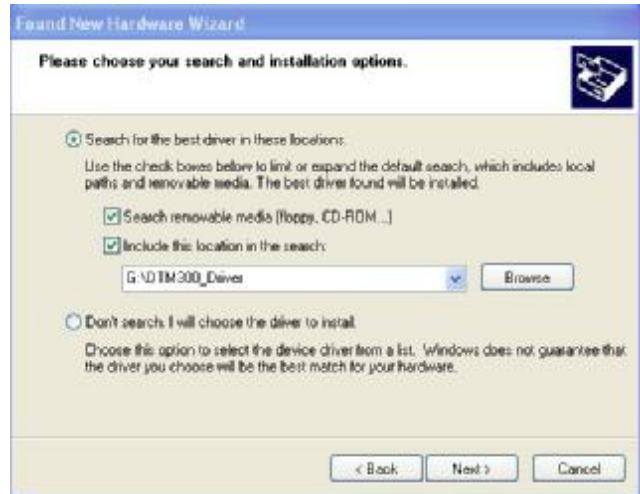
Select “Yes, this time only”, then click the “Next>”.

Select “Install from a list or specific location (Advanced)”, then click the “Next>”.

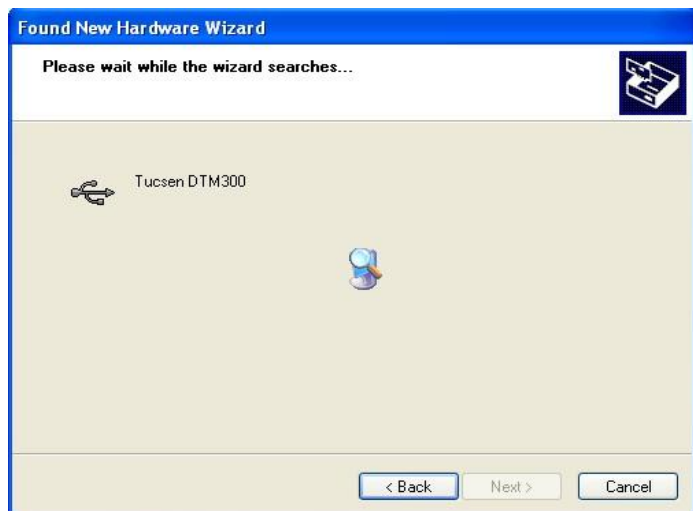


Select “Search for the best driver in these locations”. Have two options, may be selected single or both .Click the “Browse”. Select file, path: “X:\DTM300\_Driver” from the <Browse For Folder> dialog box, then click the “OK”. Click the “Next>” in the <Found New Hardware Wizard> dialog box.

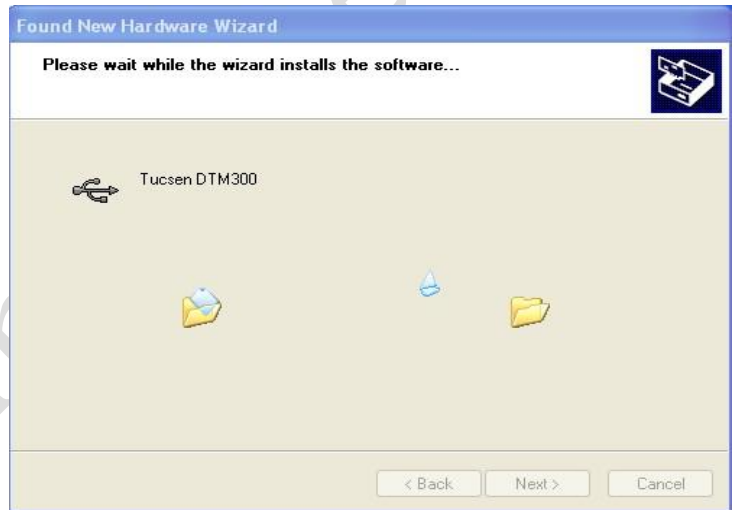
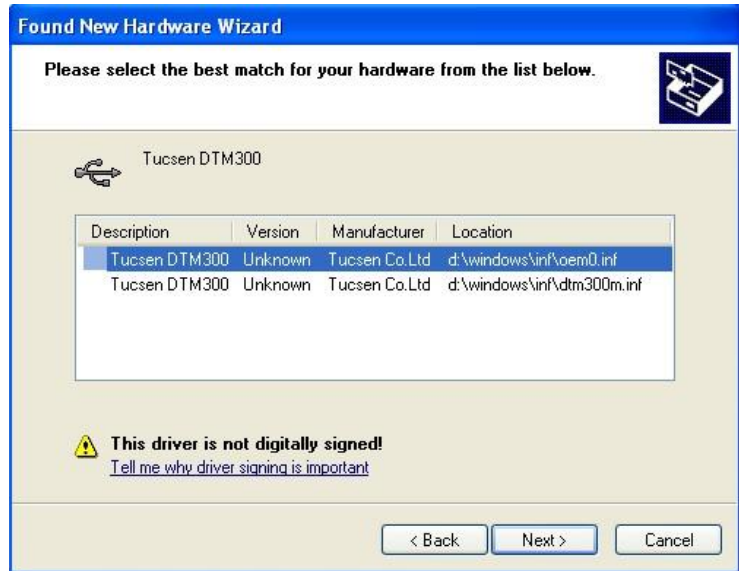
Note: “X” represent the CD.



The hardware wizard will be searched automatically the drivers.



Select at will certain item in the window, then click the “Next>”.

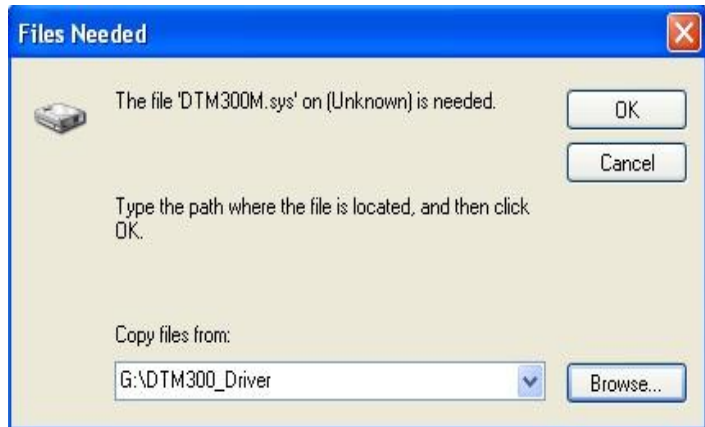


Appear the <Hardware Installation> dialog box in the installing process, please click the “Continue Anyway”.





Please click the “Browse...” if appear the <Files Needed> dialog box. Select file, path: “X:\DTM300\_Driver\DTM300M.sys” from the <Browse For Folder> dialog box, then click the “OK”. Or input the path: “X:\DTM300\_Driver\DTM300M.sys” in the <Files Needed> dialog box, then click the “OK”. Note: “X” represent the CD.



Please click the “Finish”, then the hardware drivers is finished.

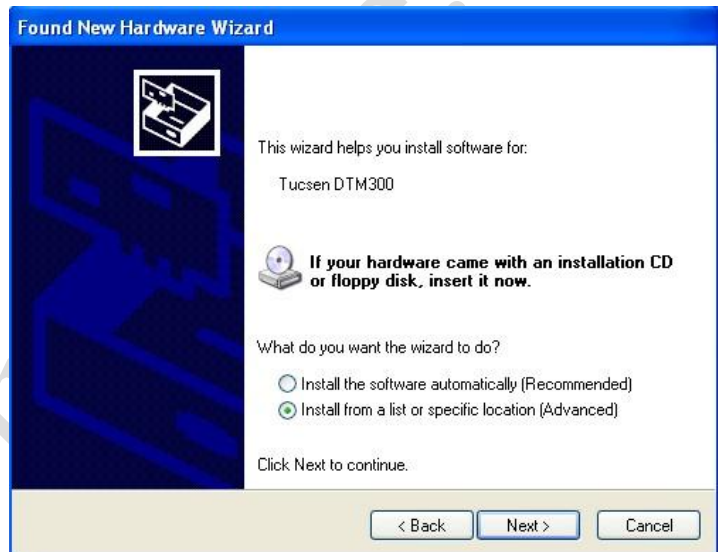


### Ø Method 3:

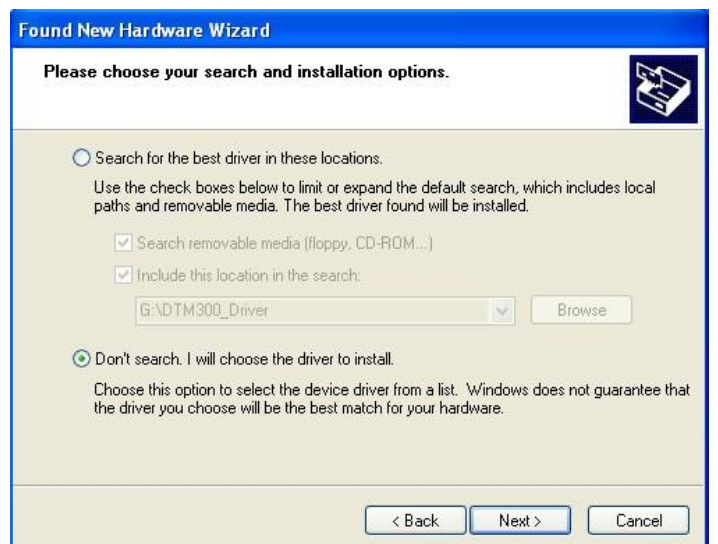
Select “Yes, this time only”, then click the “Next>”.



Select “Install from a list or Specific location ( Advanced ) ”, then click the “Next>”.



Select “Don’t search. I will choose the driver to install”, then click the “Next>”.



Click the “Have Disk...”, then appear the <Install From Disk> dialog box, please click the “Browse...”. Select file , path: “X:\DTM300\_Driver\DTM300M.sys”from the <Browse For Folder> dialog box, then click the “OK”. Or input the path: “X:\DTM300\_Driver\DTM 300M.sys”in the <Files Needed> dialog box, then click the “OK”. Click the “Next>”in the <Found New Hardware Wizard> dialog box. Note: “X” represent the CD.



Appear the <Hardware Installation> dialog box in the installing process, please click the “Continue Anyway”.





Please click the “Finish”, then the hardware drivers is finished.

